

Guidance for

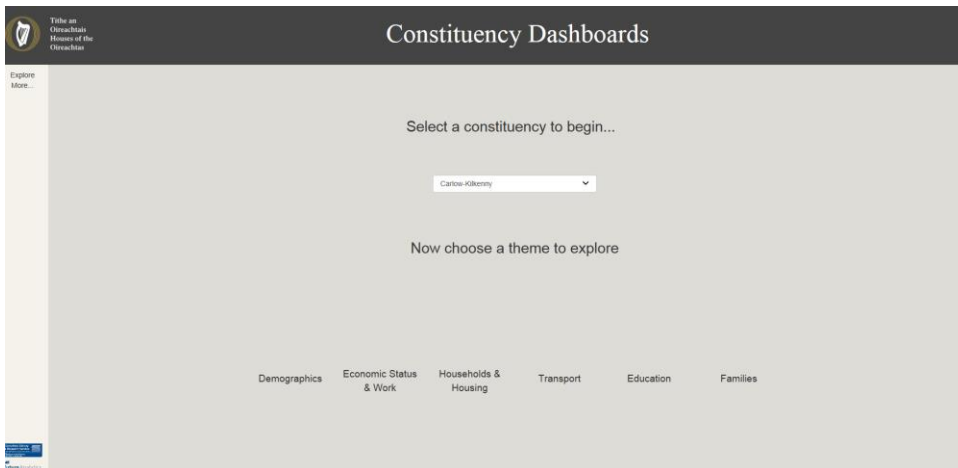


Internet Explorer users in the Oireachtas

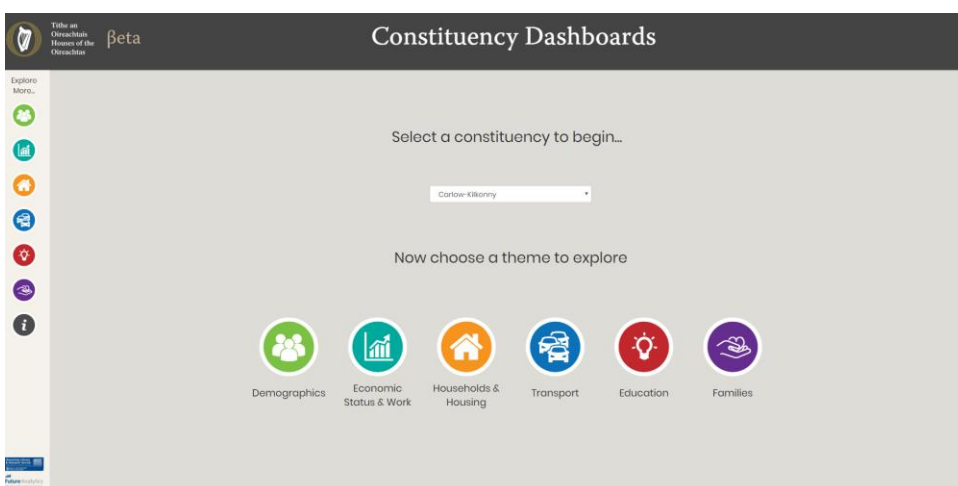
When using Internet Explorer to access the Constituency Dashboards within the Oireachtas some elements do not display correctly. This is due to a setting on your browser controlling what is downloaded when visiting the website.

This can be fixed by adjusting a setting in your browser as follows. The Dashboards can be viewed without issue on Mozilla Firefox and Chrome browsers, but Internet Explorer users in the Oireachtas will need to adjust their settings.

Example:



Display error in Internet Explorer

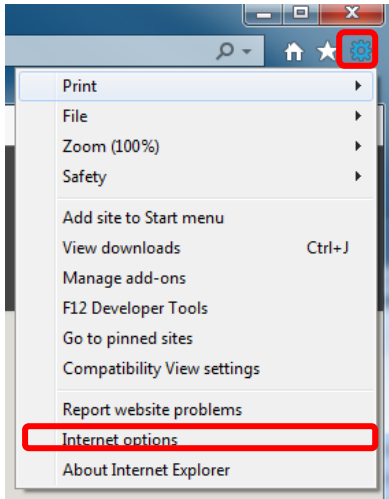


How the website is supposed to appear

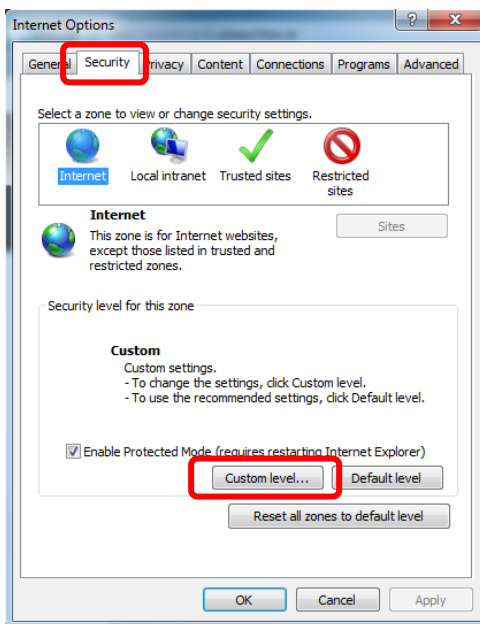
Steps to resolve overleaf...

Steps

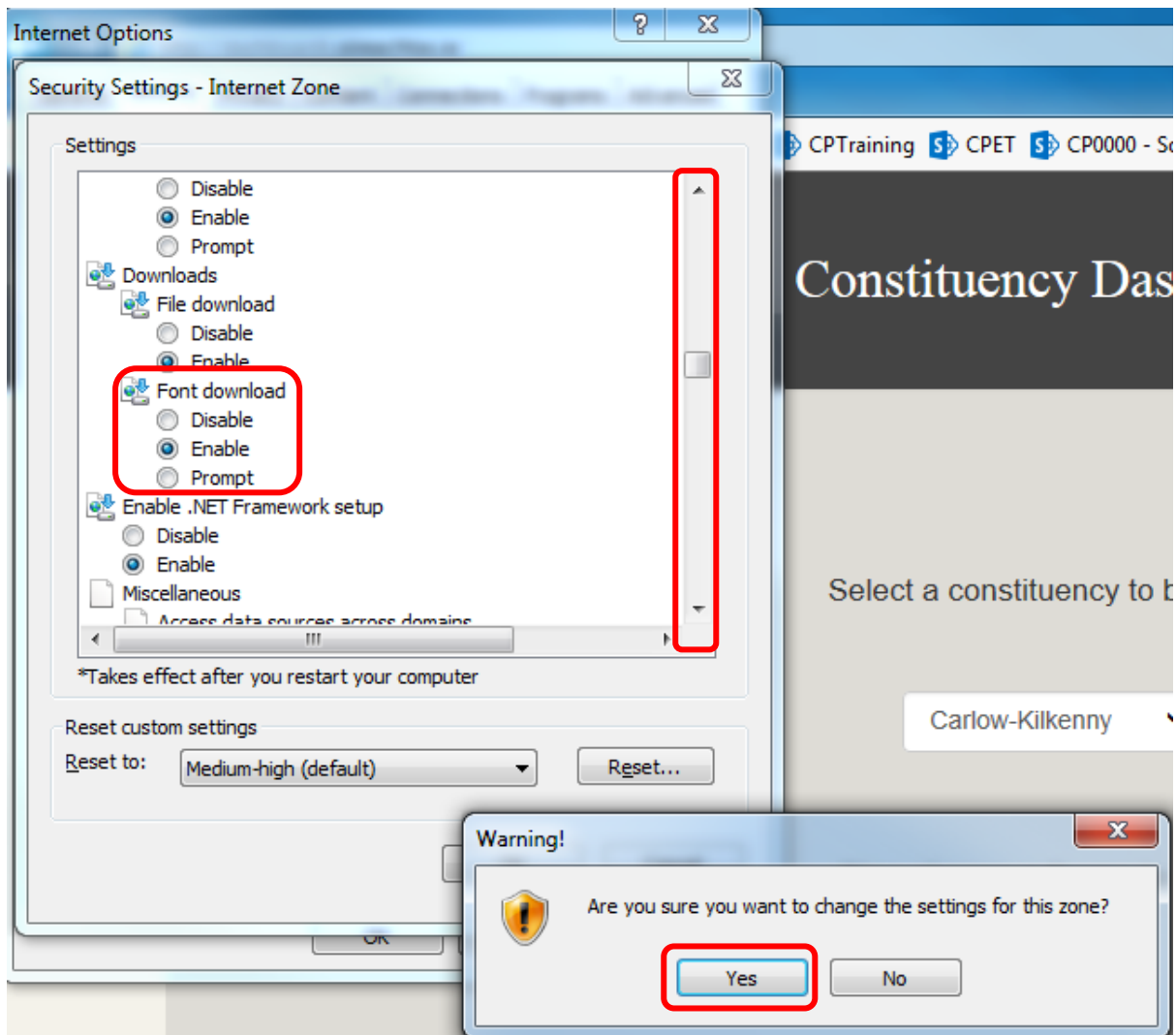
1. Open the settings menu in the top right-hand corner of your internet explorer browser.
2. Click on 'Internet options'.



3. Click on the 'Security' tab.
4. Click on the 'Custom level' button.



5. Scroll down to the 'Font download' options to 'Enable', 'Disable' and 'Prompt'. It is approximately half way down the list of options – see the scroll bar in image (image overleaf).
6. Click 'Enable'.
7. Click 'Yes', click 'Apply' and click 'Ok' to close the menu.
8. Close the browser and reopen, returning to the Constituency Dashboards website <http://dashboards.oireachtas.ie/>



Result

The Constituency Dashboards website will now correctly load for you in internet explorer within the Oireachtas.

Enjoy exploring the dashboards!

<http://dashboards.oireachtas.ie/>